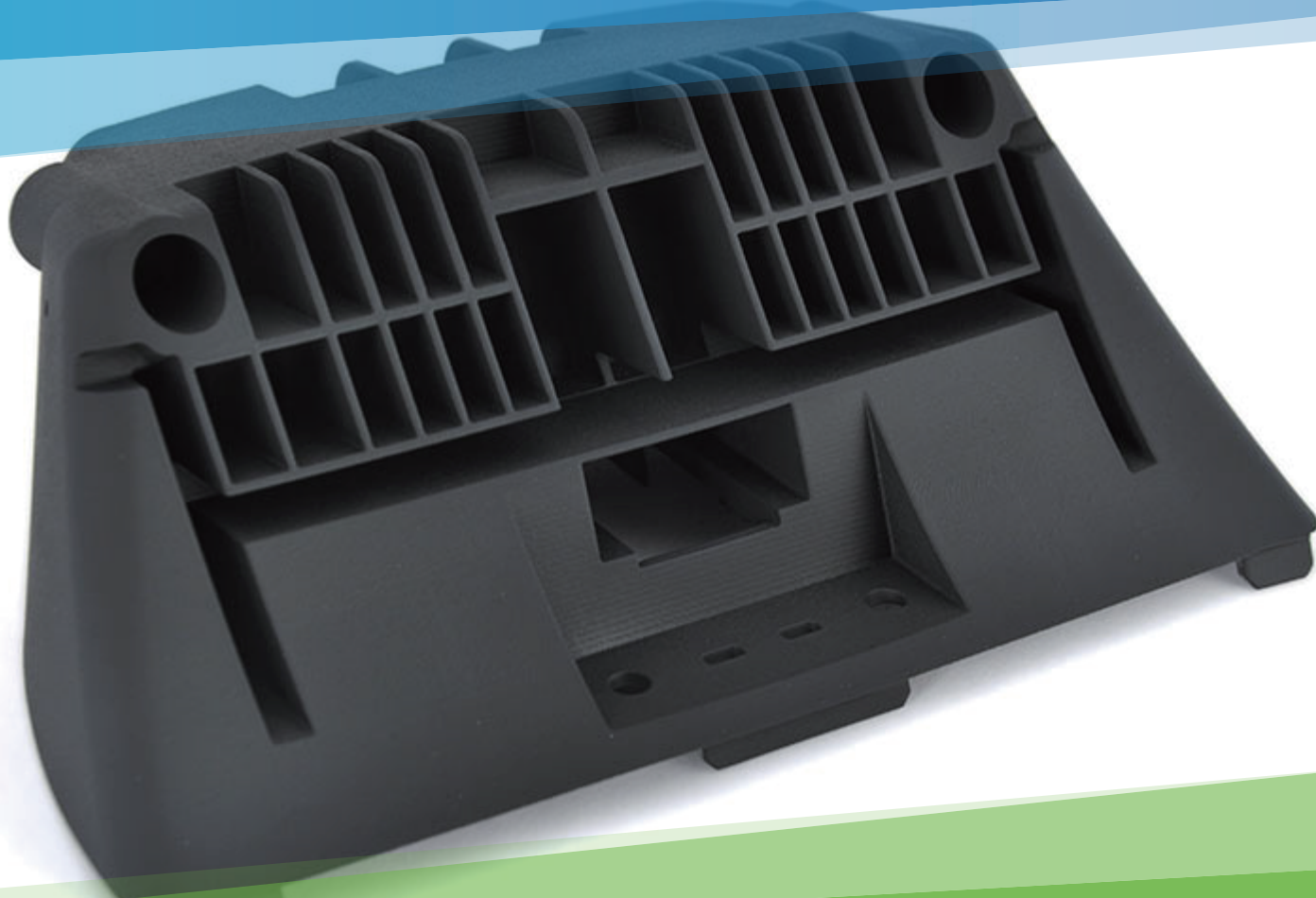


TECHNICAL DATA

Somos Taurus

Product Demonstration



Shenzhen JS Additive Technology Co., Ltd.

Floor 14-15, Building 3-A, Yunzhi Science Park, Gongming Street,
Guangming District, Shenzhen | China 518107



Material Overview

Somos Taurus is the latest addition to the high impact family of stereolithography (SLA) materials. Parts printed with this material are easy to cleaned and finished. The higher heat deflection temperature of this material increases the number of applications for the part producer and user. Somos® Taurus brings the combination of thermal and mechanical performance that until now has only been achieved using thermoplastic 3D printing techniques such as FDM and SLS.

With Somos Taurus, you can create large, accurate parts with excellent surface quality and isotropic mechanical properties. Its robustness combined with a charcoal grey appearance makes it ideal for the most demanding functional prototyping and even end-use applications.

Advantages

- Superior strength and durability
- Wide range of applications
- Excellent surface and large part accuracy
- Heat tolerance up to 90°C
- Thermoplastic-like performance, look and feel

Ideal Applications

- Customized end-use parts
- Tough, functional prototypes
- Under the hood automotive parts
- Functional testing for aerospace
- Low volume connectors for electronics

Technical Datasheet

LiquiD Properties		OpTicAI Properties		
Appearance	bluish-black	Dp 固化深度	4.2 mils	[slope of cure-depth vs. ln (E) curve]
Viscosity	~350 cps @ 30°C	Ec 临界曝光量	10.5 mJ/cm²	[critical exposure]
Density	~1.13 g/cm³ @ 25°C	Building layer thickness 构建层厚	0.08-0.012mm	

Mechanical Properties		UV Postcure		UV & Thermal Postcure	
ASTM Method	Property Description	Metric	Imperial	Metric	Imperial
D638-14	Tensile Modulus	2,310 MPa	335 ksi	2,206 MPa	320 ksi
D638-14	Tensile Strength at Yield	46.9 MPa	6.8 ksi	49.0 MPa	7.1 ksi
D638-14	Elongation at Break	24%		17%	
D638-14	Elongation at Yield	4.0%		5.7%	
D638-14	Poisson's Ratio	0.45		0.44	
D790-15e2	Flexural Strength	73.8 MPa	10.7 ksi	62.7 MPa	9.1 ksi
D790-15e2	Flexural Modulus	2,054 MPa	298 ksi	1,724 MPa	250 ksi
D256-10e1	Izod Impact (Notched)	47.5 J/m	0.89 ft-lb/in	35.8 J/m	0.67 ft-lb/in
D2240-15	Hardness (Shore D)	83		83	
D570-98	Water Absorption	0.75%		0.70%	

Web: www.jsadditive.com

Email: info@jsadditive.com

Follow us on    @jsadditive