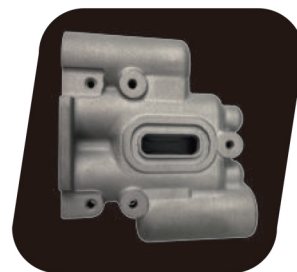
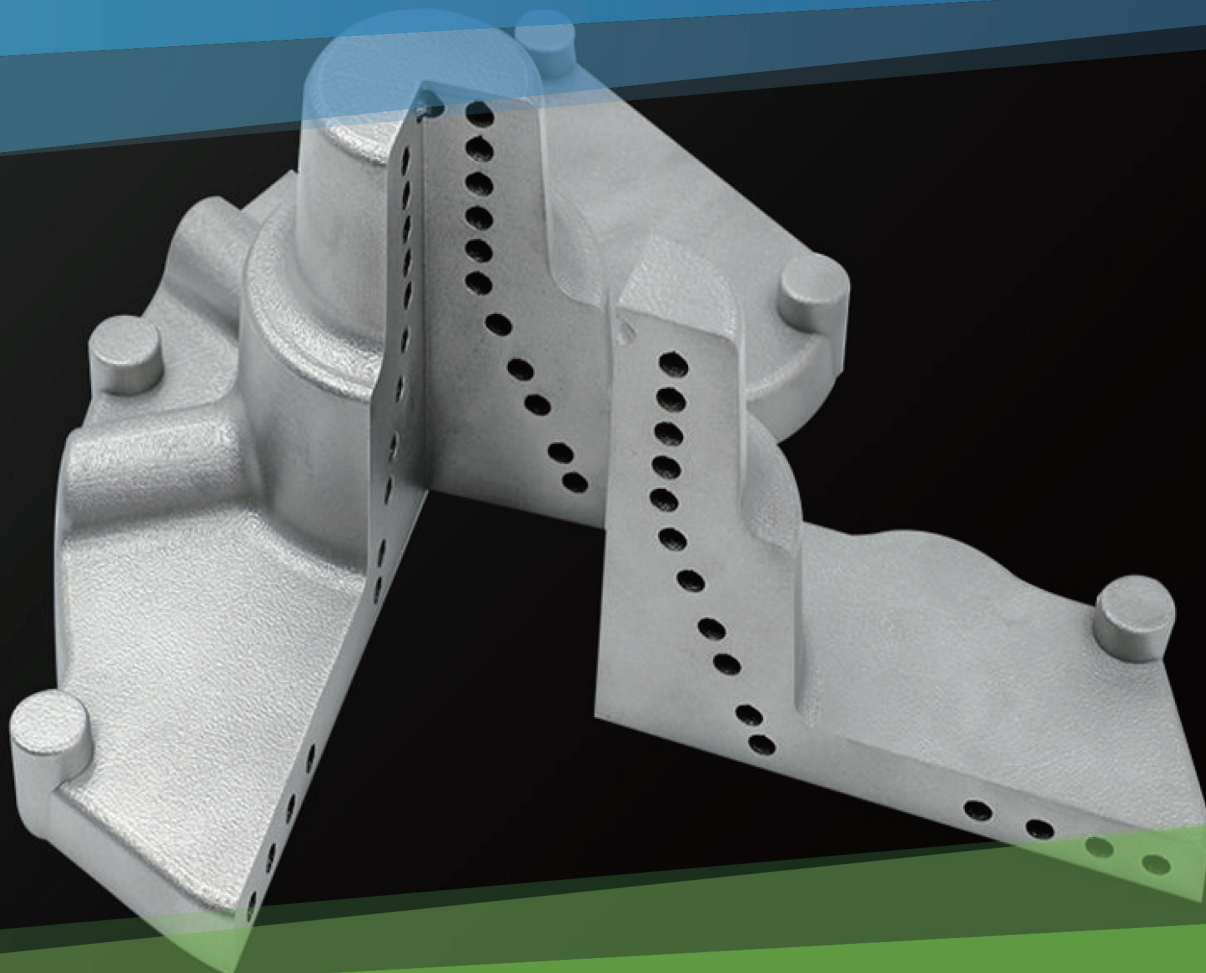


TECHNICAL DATA

Mould Steel

Product Demonstration



Shenzhen JS Additive Technology Co., Ltd.

Floor 14-15, Building 3-A, Yunzhi Science Park, Gongming Street,
Guangming District, Shenzhen | China 518107



Material Overview

Mould Steel has the advantages in reducing molding cycle, improving product quality, and more uniform mold temperature field. It can print the front and rear mold cores, inserts, sliders, guide posts and hot runner water jackets of injection molds.

Advantages

- Ideal Applications
- Good mechanical properties
- Excellent abrasion resistance
- Small heat treatment deformation rate
- High toughness and good impact resistance

Ideal Applications

- Weldable Steel
- Resistance to high temperature
- High hardness after heat treatment

Technical Datasheet

General physical properties (polymer material) / part density (g/cm³, metal material)	
Part density	8.00 g/cm ³
Thermal properties (polymer materials) / printed state properties (XY direction, metal materials)	
tensile strength	≥1150 MPa
Yield Strength	≥950 MPa
Elongation after break	≥10%
Rockwell hardness (HRC)	≥34
Mechanical properties (polymer materials) / heat- treated properties (XY direction, metal materials)	
tensile strength	≥1900 MPa
Yield Strength	≥1600 MPa
Elongation after break	≥3 %
Rockwell hardness (HRC)	≥48

Web: www.jsadditive.com

Email: info@jsadditive.com

Follow us on    @jsadditive