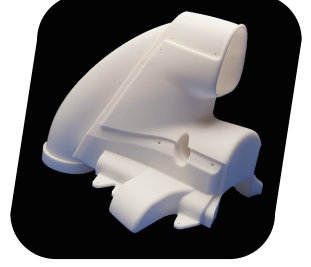
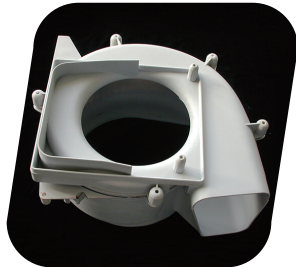


TECHNICAL DATA

Evolve 128

Product Demonstration



Shenzhen JS Additive Technology Co., Ltd.

Floor 14-15, Building 3-A, Yunzhi Science Park, Gongming Street,
Guangming District, Shenzhen | China 518107



Material Overview

EvoLVe 128 is a durable stereolithography material that produces accurate, high-detailed parts and has been designed for easy finishing. It has a look and feel that is almost indistinguishable from finished traditional thermoplastics, making it perfect for building parts and prototypes for functional testing applications — resulting in time, money and material savings during product development.

Advantages

- Easy to clean & finish
- High strength & durability
- Accurate & dimensionally stable
- High detail

Ideal Applications

- Aerospace
- Automotive
- Medical
- Consumer products
- Electronics

Technical Datasheet

Liquid Properties		Optical Properties		
Appearance	White	Dp	9.3 mJ/cm ²	[critical exposure]
Viscosity	~380 cps @ 30°C	Ec	4.3 mils	[slope of cure-depth vs. ln (E) curve]
Density	~1.12 g/cm ³ @ 25°C	Building layer thickness	0.08-0.12mm	

Mechanical Properties		UV Postcure	
ASTM Method	Property Description	Metric	Imperial
D638M	Tensile Modulus	2,964 MPa	430 ksi
D638M	Tensile Strength at Yield	56.8 MPa	8.2 ksi
D638M	Elongation at Break	11%	
D2240	Flexural Modulus	2,654 MPa	385 ksi
D256A	Izod Impact (Notched)	38.9 J/m	0.729 ft-lb/in
D2240	Hardness (Shore D)	82	
D570-98	Water Absorption	0.40%	

Web: www.jsadditive.com

Email: info@jsadditive.com

Follow us on    @jsadditive