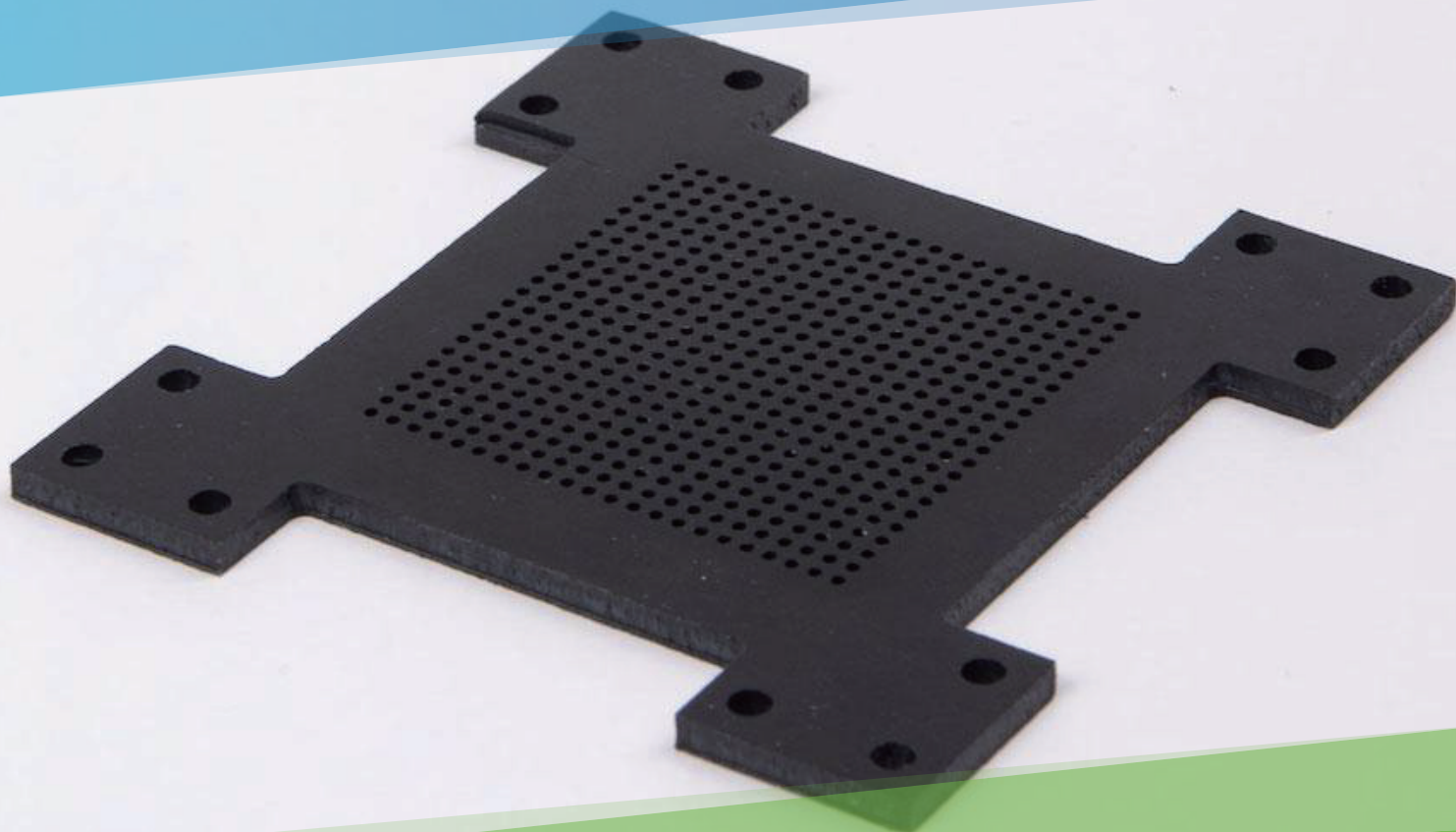


TECHNICAL DATA

# ABS

P r o d u c t   D e m o n s t r a t i o n



Shenzhen JS Additive Technology Co., Ltd.

Floor 14-15, Building 3-A, Yunzhi Science Park, Gongming Street,  
Guangming District, Shenzhen | China 518107



## Material Overview

ABS sheet has excellent impact resistance, heat resistance, low temperature resistance, chemical resistance and electrical properties. It is a very versatile thermoplastic material for secondary processing such as metal spraying, electroplating, welding, hot pressing and bonding. The operating temperature is  $-20^{\circ}\text{C}$ – $100^{\circ}$ .

## Advantages

- Excellent impact resistance
- Heat resistance and low temperature resistance
- Chemical resistance and electrical properties
- Easy processing, dimensional stability.

## Ideal Applications

- Prototype models
- Mechanical parts
- Automobiles
- Electronic appliances
- Instrumentation
- Chemical equipment
- Aviation
- Medical

## Technical Datasheet

项 目 Items	标准 Standard		
密度 Density	ASTM D792	g/cm <sup>3</sup>	1.05
屈服拉伸强度 Tensile strength at yield	ASTM D638	Mpa	50
断裂伸长率 Elongation at break	ASTM D638	%	40
弯曲强度 Bending strength	ASTM 790	Mpa	60
弯曲模量 Flexural modulus	ASTM 790	Mpa	1800
邵氏硬度 Shore Hardness	ASTM D2240	D	80
冲击强度 Impact strength	ASTM D256	J/M	200
熔点 melting point	DSC	$^{\circ}\text{C}$	150
热变形温度 Heat distortion temperature	ASTM D648	$^{\circ}\text{C}$	80
长期工作温度 long-term operating temperature	—	$^{\circ}\text{C}$	75
短期工作温度 Short-term operating temperature	—	$^{\circ}\text{C}$	100
热传导率 Thermal conductivity	DIN 52612-1	W/(K-M)	0.17

Web: [www.jsadditive.com](http://www.jsadditive.com)

Email: [info@jsadditive.com](mailto:info@jsadditive.com)

Follow us on    @jsadditive